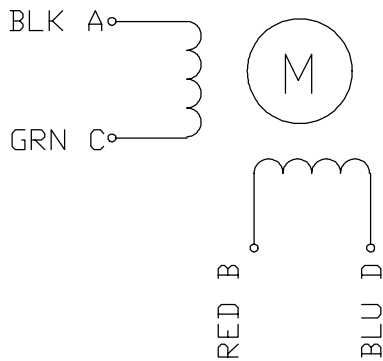


specifications:

| MODEL | PHASE | STEP ANGLE | RATED VOLTAGE | CURRENT /PHASE | RESISTANCE /PHASE | INDUCTANCE /PHASE | HOLDING TORQUE | WEIGHT |
|-------|-------|------------|---------------|----------------|-------------------|-------------------|----------------|--------|
|       |       | DEG/STEP   | V             | A              | ohms              | mH                | N.cm           | Kg     |
|       | 2     | 1.8        | 3.6           | 3.0            | 1.25              | 5.6               | 270            | 1.5    |

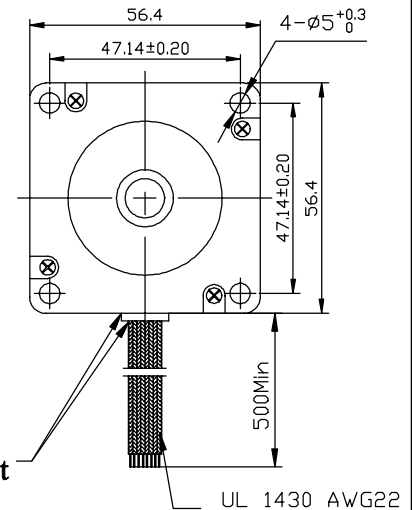
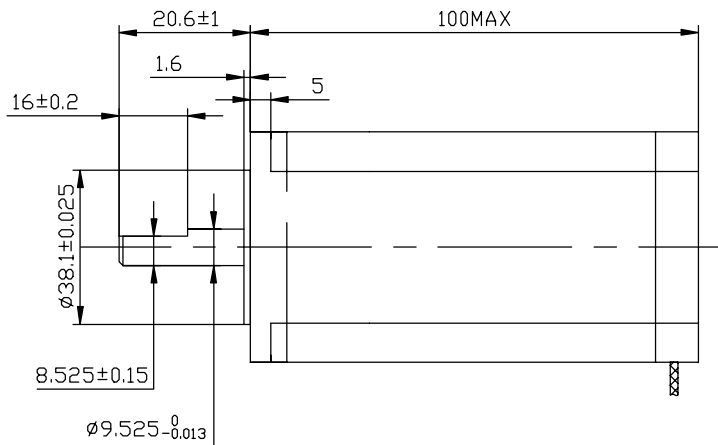
Wiring Diagram:



| CW DIRECTION | STEP | A | C | B | D |
|--------------|------|---|---|---|---|
| ↓            | 1    | + |   | + |   |
|              | 2    |   | + | + |   |
|              | 3    |   | + |   | + |
|              | 4    | + |   |   | + |
|              | 1    | + |   | + |   |

CW see from the flange side

Dimension:



use Loctite352 to seal up the exit

**technical request :**

- 1.use Loctite7649 to cleaning the end cap and stack assembly**
- 2.use Loctite510 to seal up the interface between end cap and stack assembly. make sure the glue to be uniformity**
- 3.bearing NSK 608DD,NMB6000DD**
- 4.seal up the exit**

|  |                        |                          |
|--|------------------------|--------------------------|
| DESIGN                                 | DATE                   | P/N.                     |
| REVCN NO                               | DESCRIPTION            | DRN APP'D DATE           |
| UNLESS OTHERWISE SPECIFIED TOLERANCES: |                        | MATERIAL                 |
| DECIMALS:                              | ANGULAR:               | CHECK                    |
| .x ±0.5                                | ±0°30'                 | APPD                     |
| .xx ±0.25                              |                        | SCALE                    |
| .xxx ±0.1                              |                        | SHEET OF                 |
| UNIT: mm                               | THIRD ANGLE PROJECTION | REV                      |
| DO NOT SCALE DRAWING                   |                        | <b>KELING TECHNOLOGY</b> |

TITLE : SPECIFICATION  
 USED ON : KL23H2100-30-4A-IP65  
 DWG NO. REV