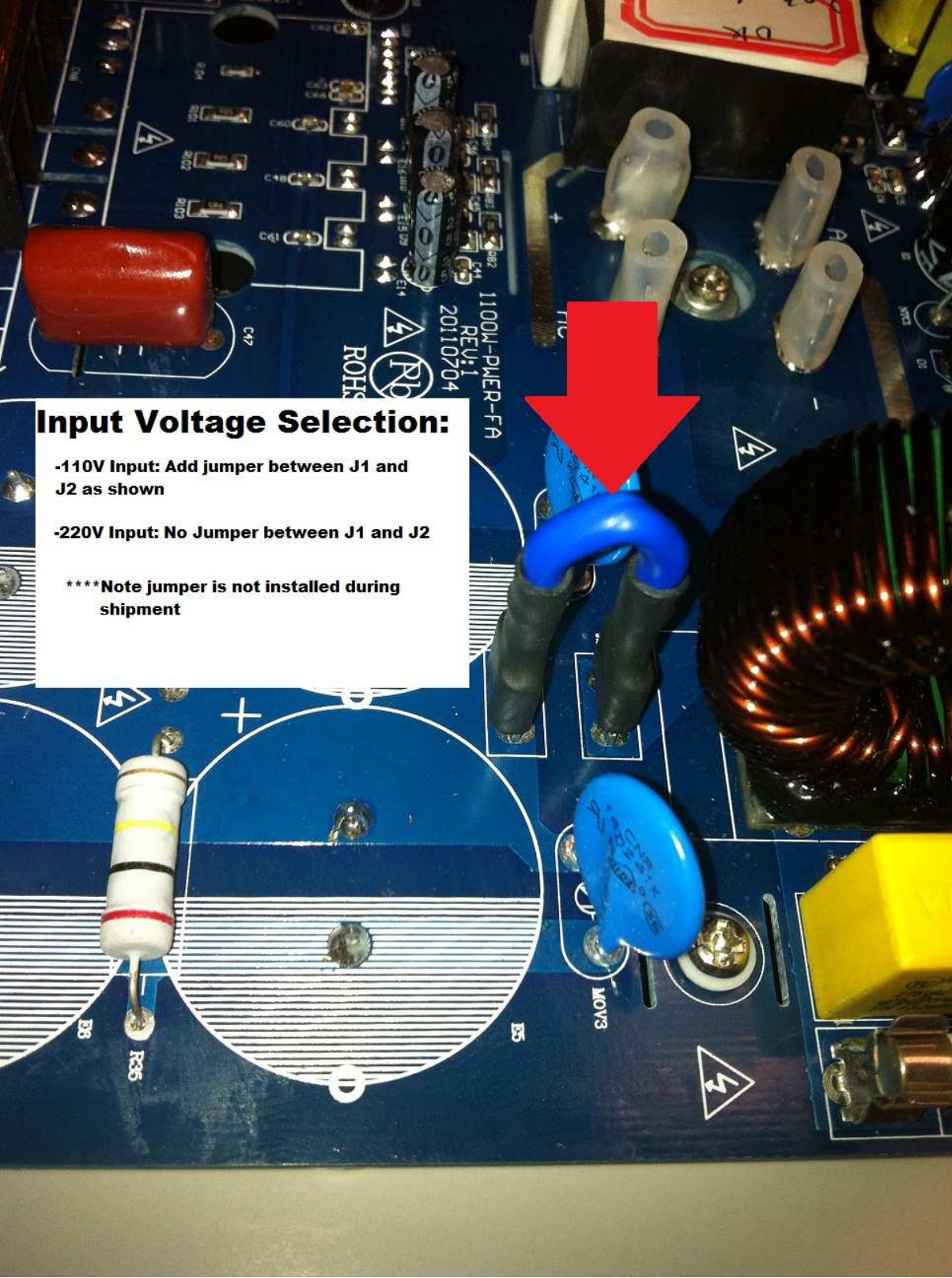


Input Voltage Selection:

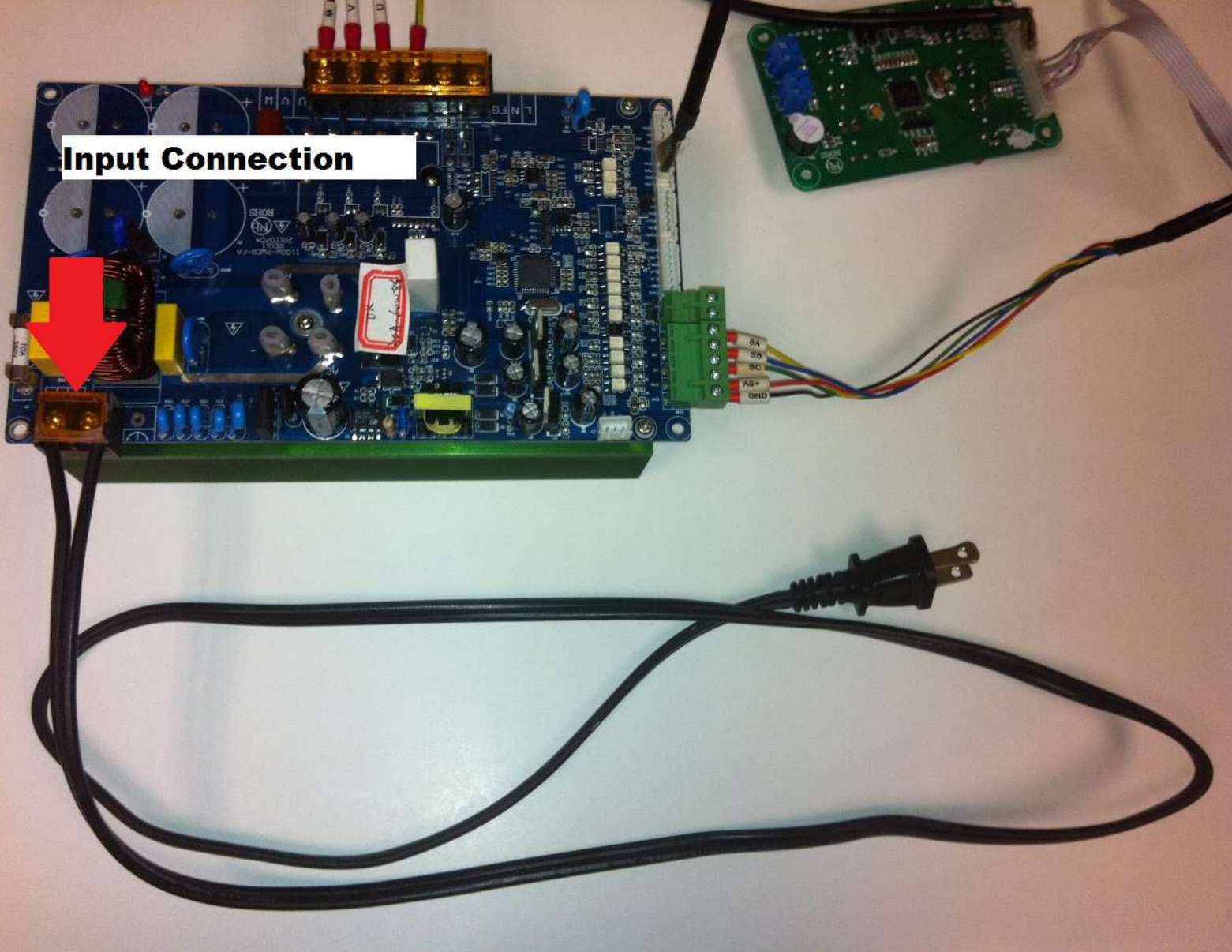
-110V Input: Add jumper between J1 and J2 as shown

-220V Input: No Jumper between J1 and J2

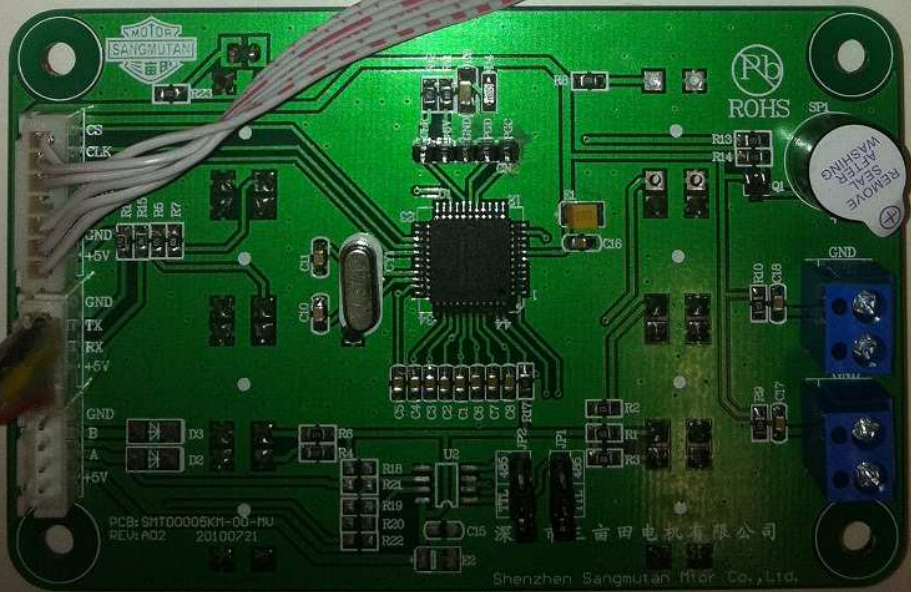
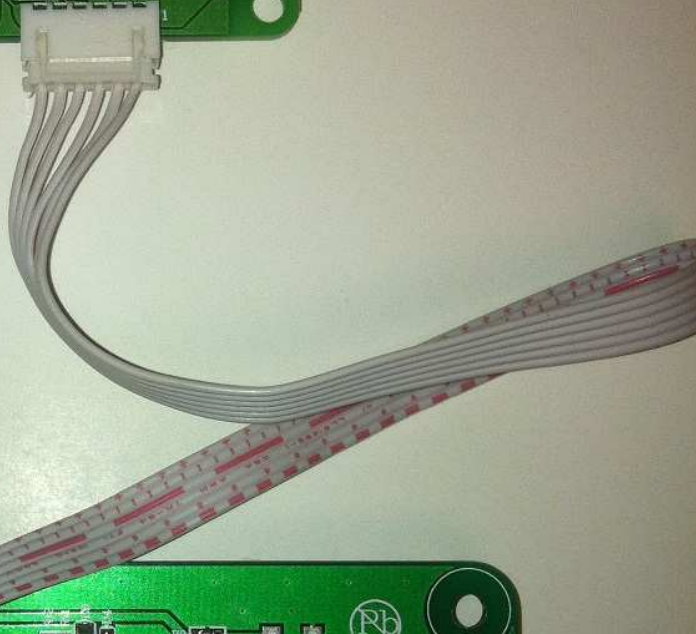
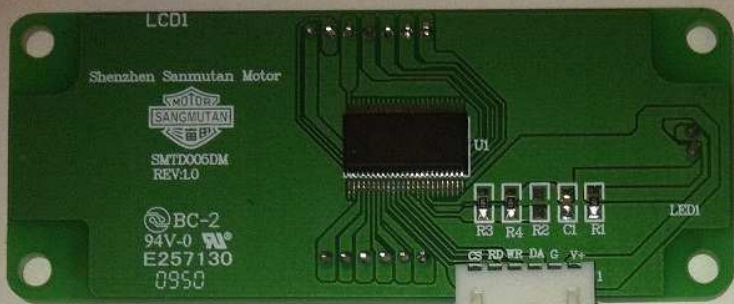
****Note jumper is not installed during shipment



Input Connection



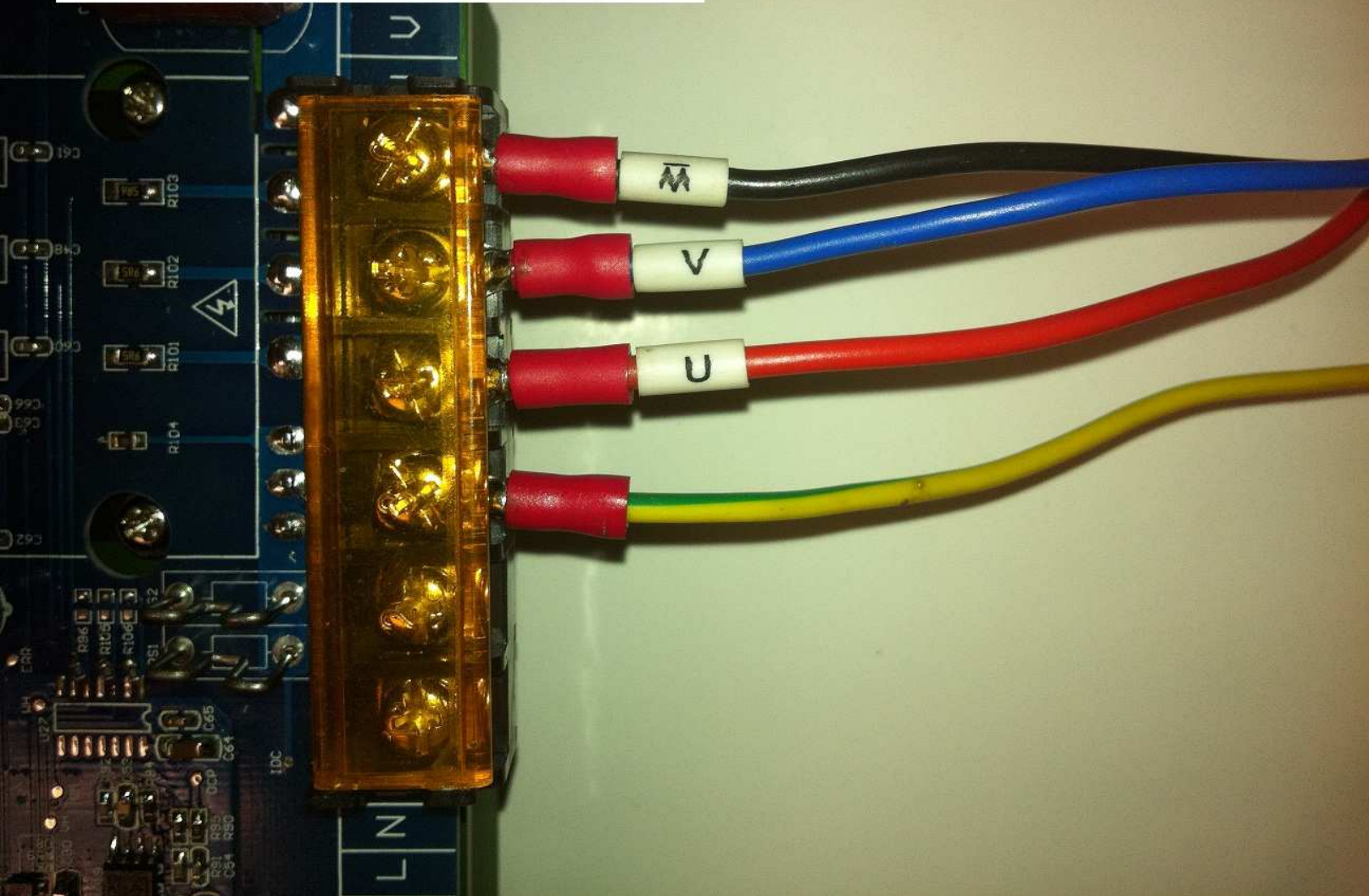
Connections Between Control panel and LCD



Connections between the control/display and the driver



High Voltage Motor Connections



Low voltage/Signal Connections for the Motor

