

# 350W Single Output Switching Power Supply

- AC input range selectable by switch
- Protections: Short circuit / Overload /  
Over voltage / Over temp.
- Forced air cooling by built-in DC fan
- Fixed switching frequency at 25KHz
- Cooling fan ON/OFF auto control
- 1 year warranty



230x 115x 50 mm

AC input voltage range ..... 90~132VAC / 180~264VAC selectable by switch

AC inrush current ..... Cold start, 25A at 115VAC, 50A at 230VAC

DC adjustment range .....  $\pm 10\%$  rated output voltage

Overload protection ..... 105%~145% hiccup mode, auto-recovery

Setup, rise, hold up time ... 200ms, 50ms, 20ms at full load and 230VAC

Withstand voltage ..... I/P-O/P:1.5KVAC, I/P-FG:1.5KVAC, 1minute

Working temperature ..... 0~50 °C (refer to output derating curve)

Safety standards ..... Design refer to UL1950

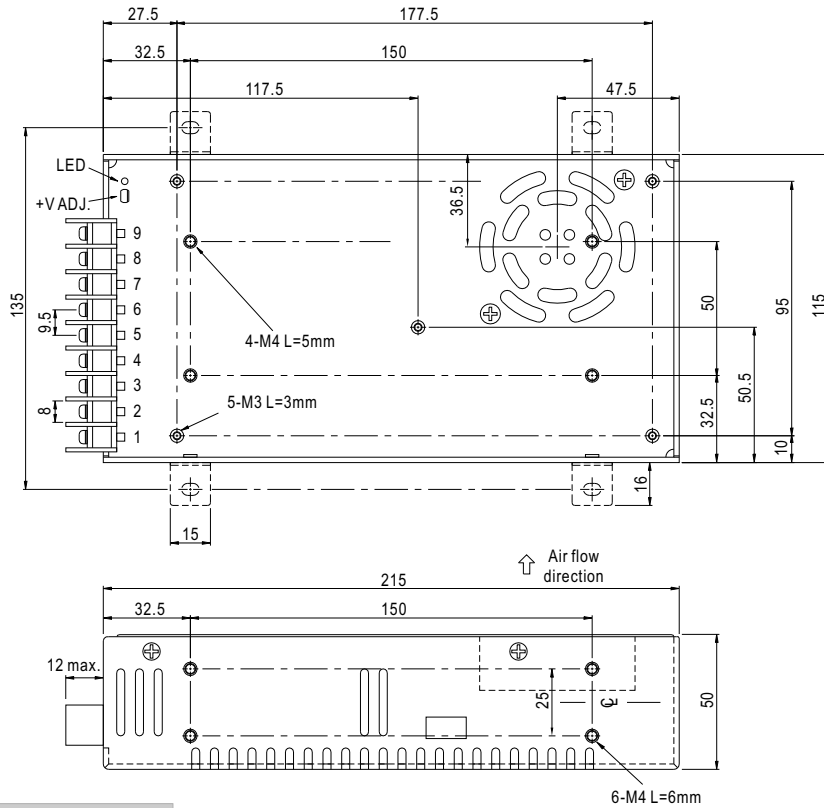
EMC standards ..... Design refer to FCC part 15 J

Connection ..... 9P/ 9.5mm pitch terminal block

Packing ..... 1.15kg ; 17pcs / 20.5kg / 1.25CUFT

Model No.	Output	Tol.	R&N	Effi.
S-350-5	5V, 0~50.0A	$\pm 2\%$	150mV	73%
S-350-7.5	7.5V, 0~40.0A	$\pm 2\%$	150mV	76%
S-350-12	12V, 0~29.0A	$\pm 1\%$	150mV	74%
S-350-13.5	13.5V, 0~25.8A	$\pm 1\%$	150mV	79%
S-350-15	15V, 0~23.2A	$\pm 1\%$	150mV	78%
S-350-24	24V, 0~14.6A	$\pm 1\%$	150mV	81%
S-350-27	27V, 0~13.0A	$\pm 1\%$	200mV	82%
S-350-48	48V, 0~7.30A	$\pm 1\%$	240mV	83%

**Mechanical Specification**



Terminal Pin No. Assignment

Pin No.	Assignment	Pin No.	Assignment
1	AC/L	4~6	DC OUTPUT -V
2	AC/N	7~9	DC OUTPUT +V
3	FG $\pm$		

**Block Diagram**

