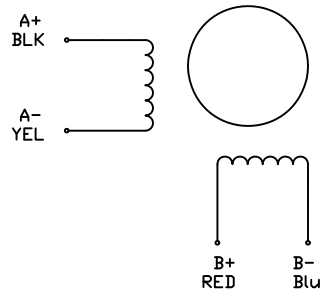
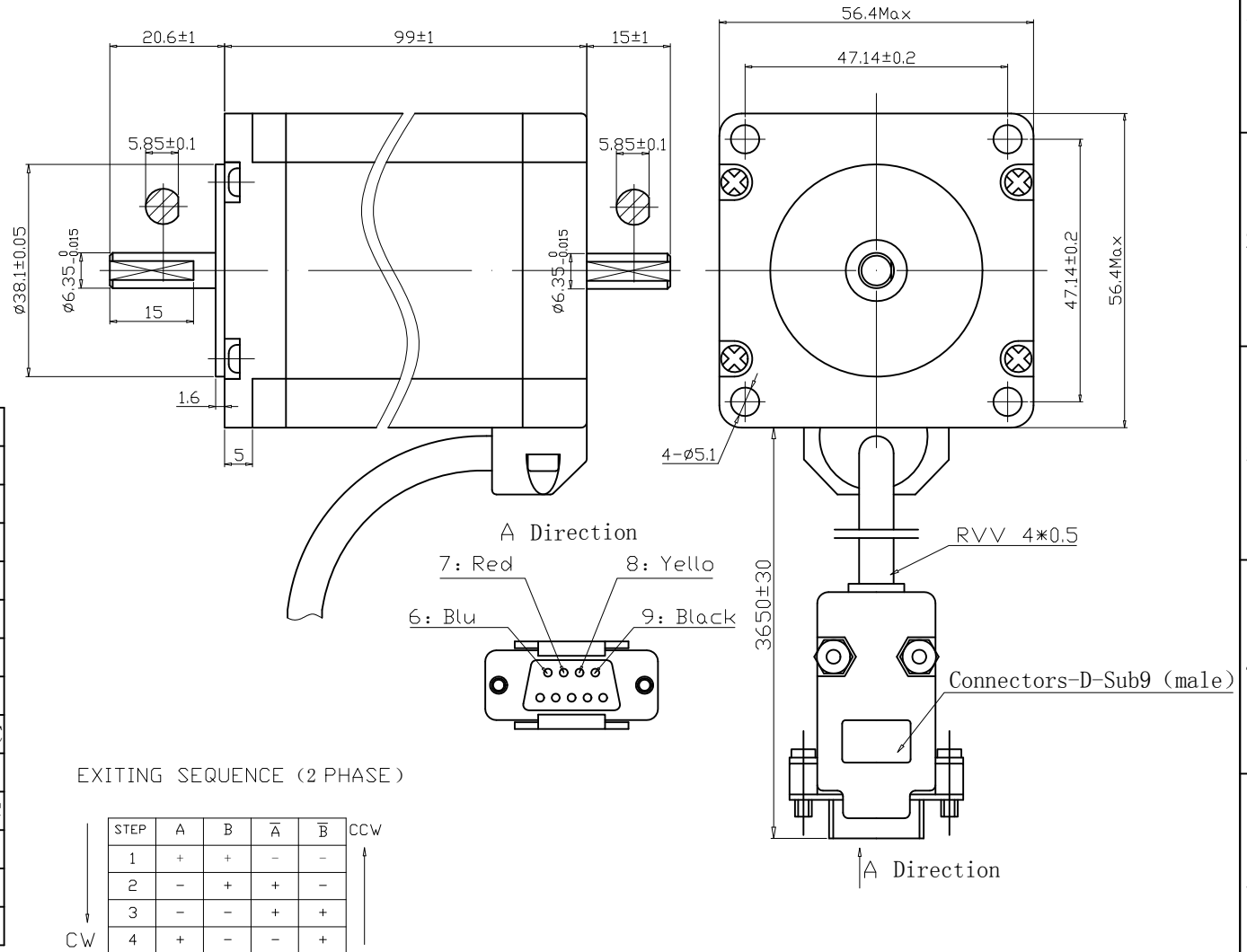


Wiring Diagram



SPECIFICATIONS

1	Number of Phase	2
2	Step Angle	1.8° ±5%
3	Holding Torque	2.69 N.m
4	Voltage	3.0 VDC
5	Current	3.5 A
6	Phase Resistance (20°C)	0.86 ±10% Ω
7	Phase Inductance (1KHz)	2.8 ±20% mH
8	Rotor Inertia	700g · cm <sup>2</sup>
9	Insulation Resistance	100M Ω 500VDC
10	Insulation Class	B ( 130°C )
11	Ambient Temperature	-20°C to 50°C
12	Ambient Humidity	15% to 95%
13	Motor Weight	Approx xx kg
14		

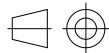


EXITING SEQUENCE (2 PHASE)

STEP	A	B	$\bar{A}$	$\bar{B}$	
1	+	+	-	-	CCW ↑
2	-	+	+	-	
3	-	-	+	+	
4	+	-	-	+	

Unit:mm

First angle method



Tolerances for linear and angular dimensions without individual tolerance indications  
GB/T 1804-m eqv ISO 2768-1:m

Geometrical tolerances for features without individual tolerance indications  
GB/T 1184-k eqv ISO 2768-2:k

UNLESS OTHERWISE SPECIFIED

DESIGN			
CHECK			
TECHNOLOGY			
STANDARD			
APPROVE			
NAMES	SINGATURE	DATE	

TYPE: HYBRID STEPPING MOTOR SCALE **xx** Rev. 2.0 SHEET 1 OF 1

Model: **KL23H2100-35-4BC**