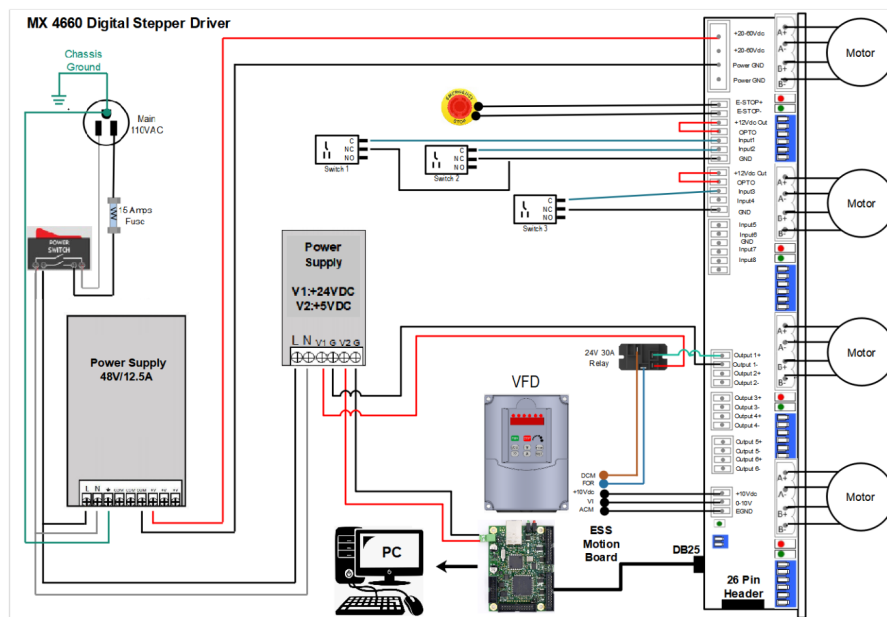


# MX4660 Control Box with Ethernet Connection

## Requirements:

1. [MX4660 Control Box](#)
  - MX4660 Driver
  - ESS Board
  - 48V/12.5A Power Supply
  - 24V/1A and 5V/2A Power Supply
  - 24V/30A Relay
2. NEMA23 Stepper Motor
3. [220V 2.2KW VFD](#)
4. [2.2KW Spindle](#)

## Wiring:



**AUTOMATION  
TECHNOLOGY** Inc.  
Motion Control Parts and CNC Equipment.

[MX4660 Controller](#)

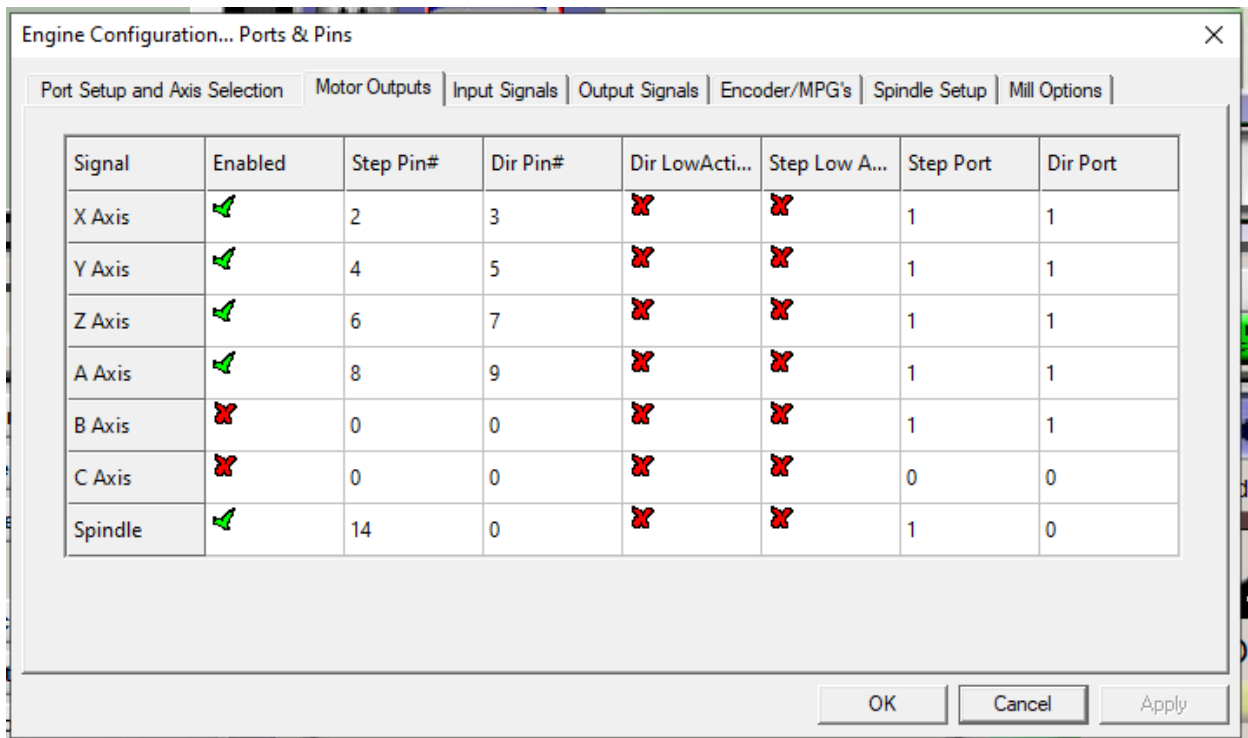
Contact us:

847-984-0882

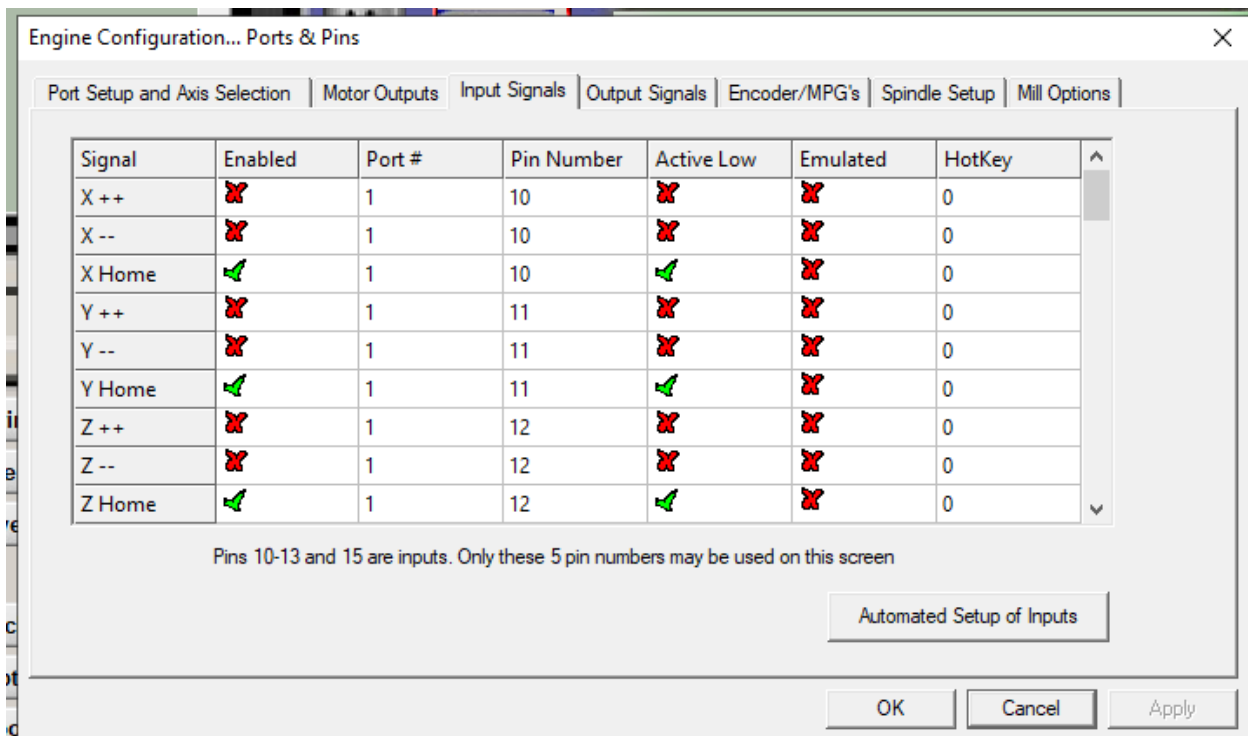
[automationtechinc@yahoo.com](mailto:automationtechinc@yahoo.com)

## Mach3 Setup

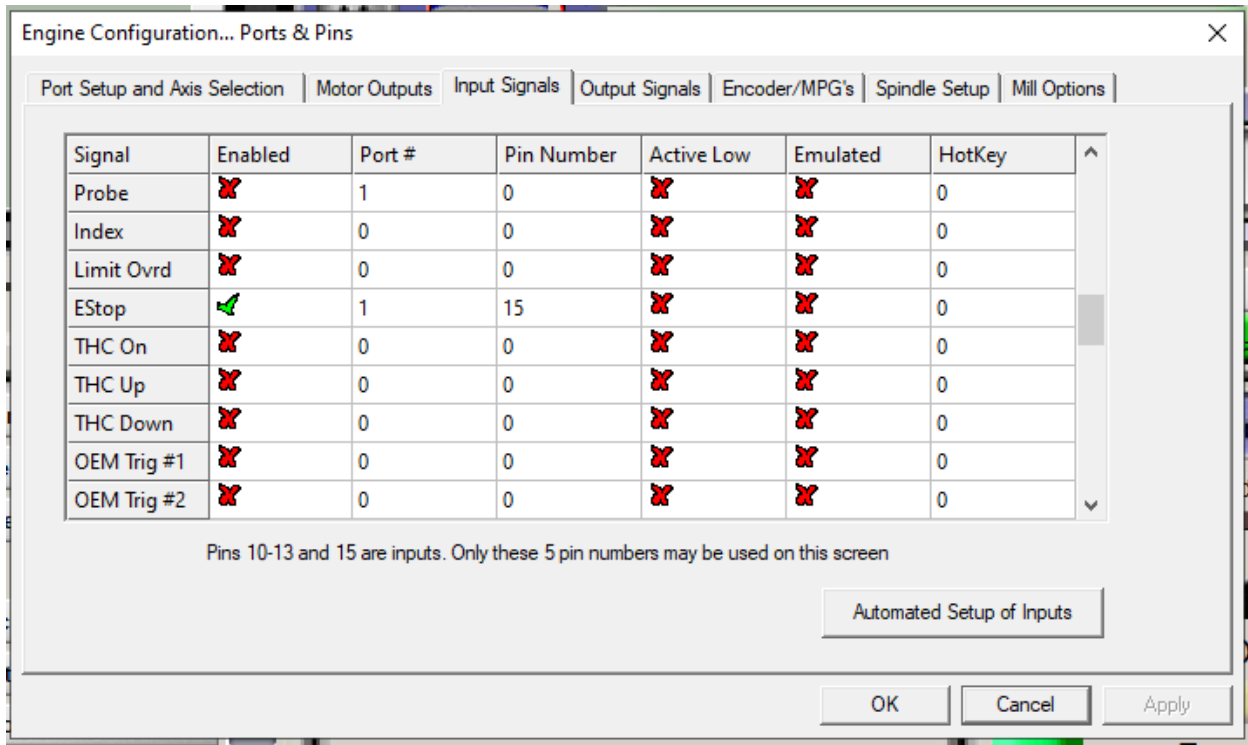
- Motor Outputs



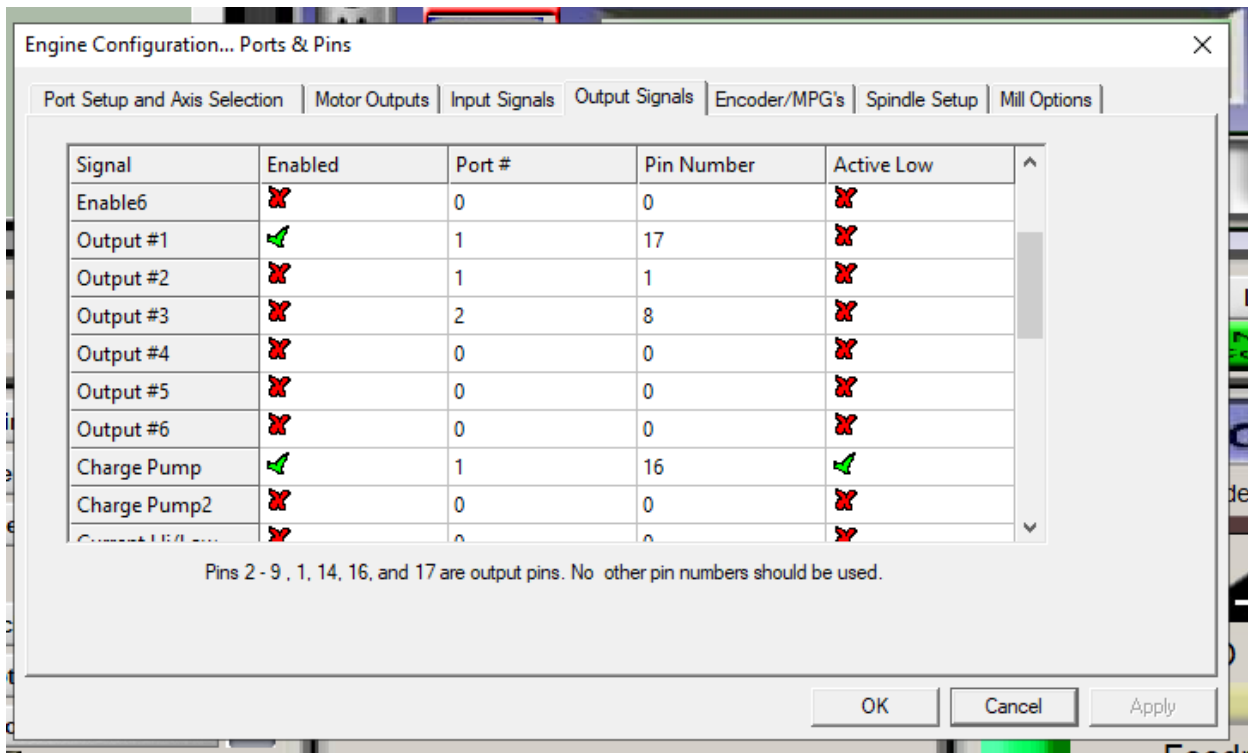
- Input Signals



- Input Signals



- Output Signals



- Spindle Setup

Engine Configuration... Ports & Pins

Port Setup and Axis Selection | Motor Outputs | Input Signals | Output Signals | Encoder/MPG's | Spindle Setup | Mill Options

**Relay Control**

Disable Spindle Relays

Clockwise (M3) Output #

CCW (M4) Output #

Output Signal #'s 1-6

**Flood Mist Control**

Disable Flood/Mist relays Delay

Mist M7 Output #

Flood M8 Output #

Output Signal #'s 1-6

**ModBus Spindle - Use Step/Dir as well**

Enabled Reg  64 - 127

Max ADC Count

**Motor Control**

Use Spindle Motor Output

PWM Control

Step/Dir Motor

PWMBase Freq.

Minimum PWM  %

**Special Functions**

Use Spindle Feedback in Sync Modes

Closed Loop Spindle Control

P  I  D

Spindle Speed Averaging

**General Parameters**

CW Delay Spin UP  Seconds

CCW Delay Spin UP  Seconds

CW Delay Spind DOWN  Seconds

CCW Delay Spin DOWN  Seconds

Immediate Relay off before delay

**Special Options, Usually Off**

HotWire Heat for Jog

Laser Mode. freq I

Torch Volts Control

Torch Auto Off

OK Cancel Apply