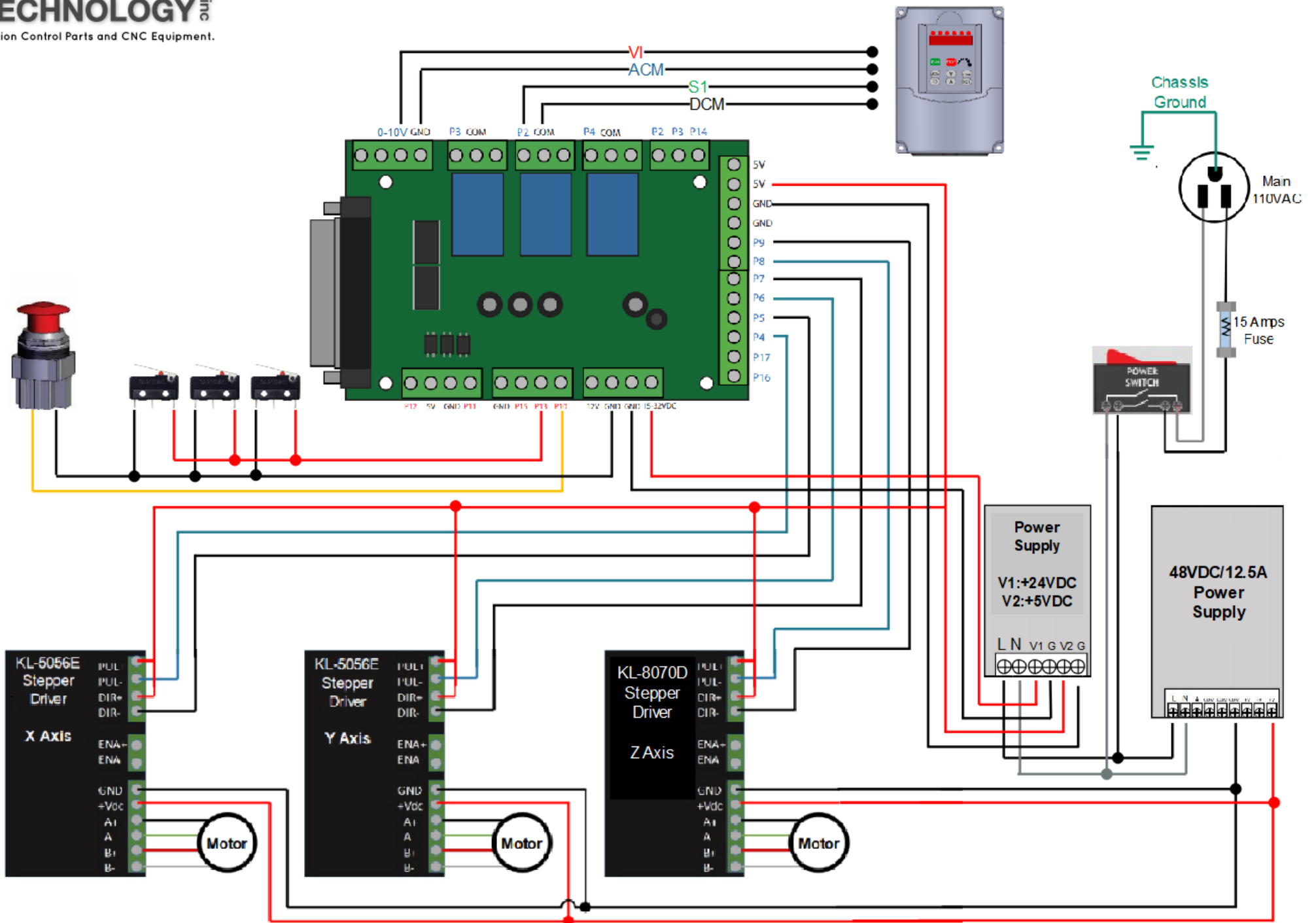
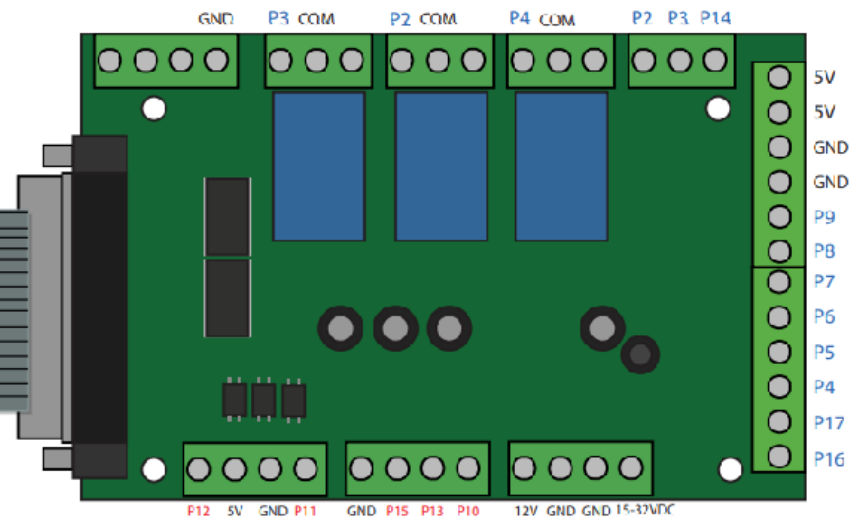
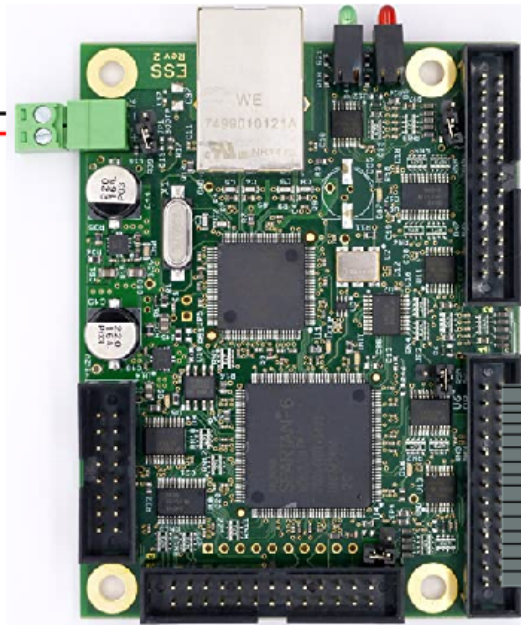
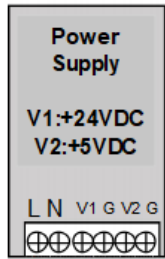


## **6 Axis Mach3 Breakout Board KL-DB25-6 With Relay and Spindle Control**

### **Requirements:**

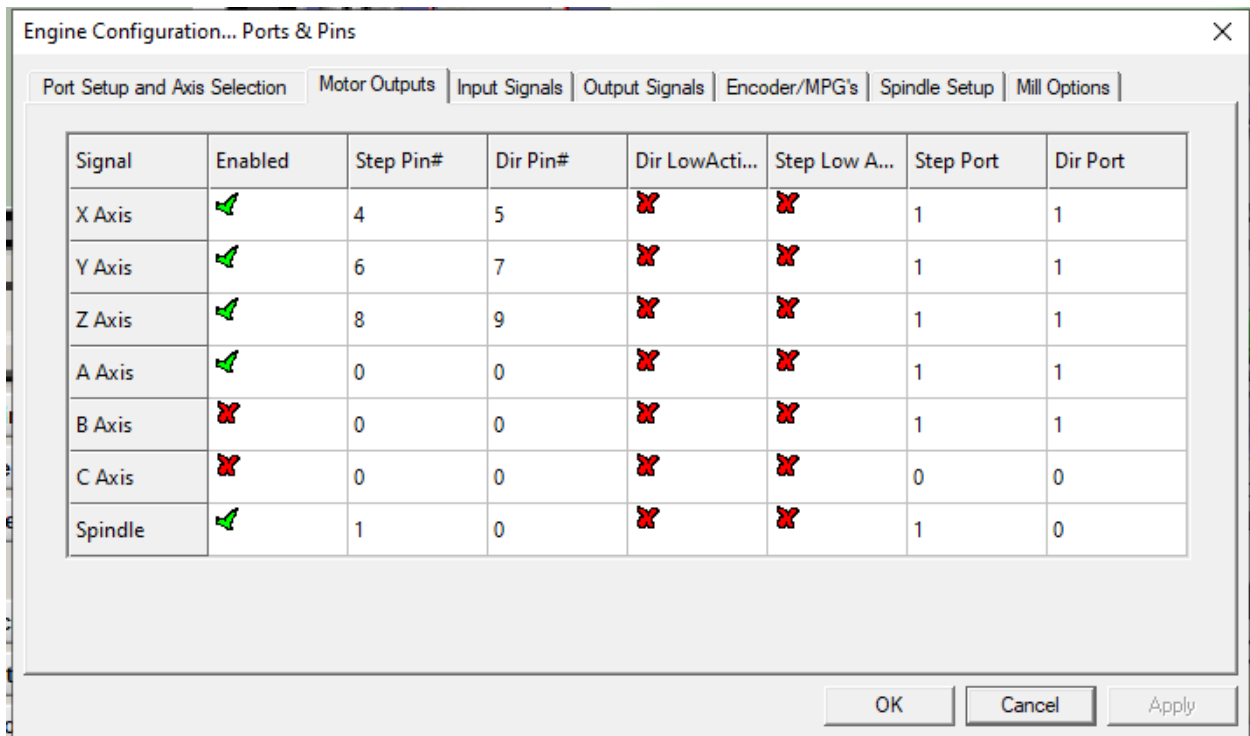
1. [6 Axis Breakout Board KL-DB25-6](#)
2. [48V/12.5A Power Supply](#)
3. 24V with 5V Power Supply
4. [KL-5056, KL-8070D Stepper Motor Driver](#)
5. [NEMA23, NEMA34 Stepper Motor](#)
6. [220V 2.2KW VFD](#)
7. [2.2KW Spindle](#)



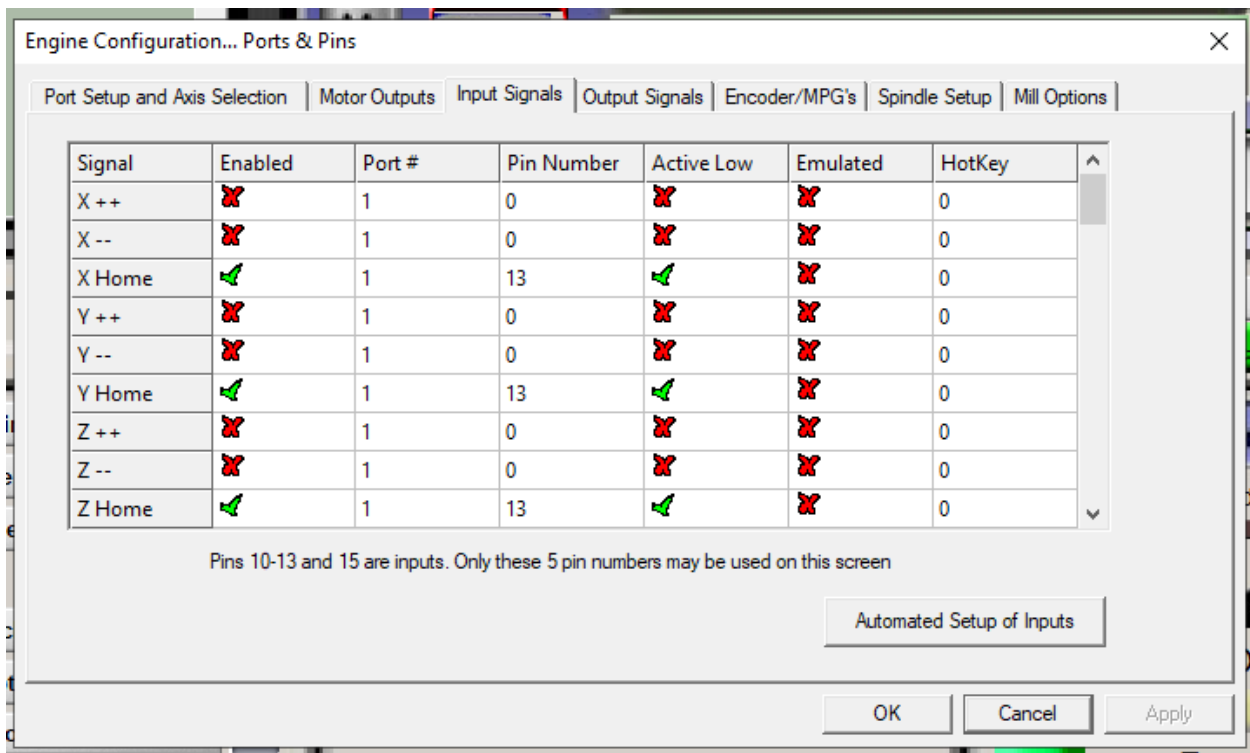


### Mach3 Setup

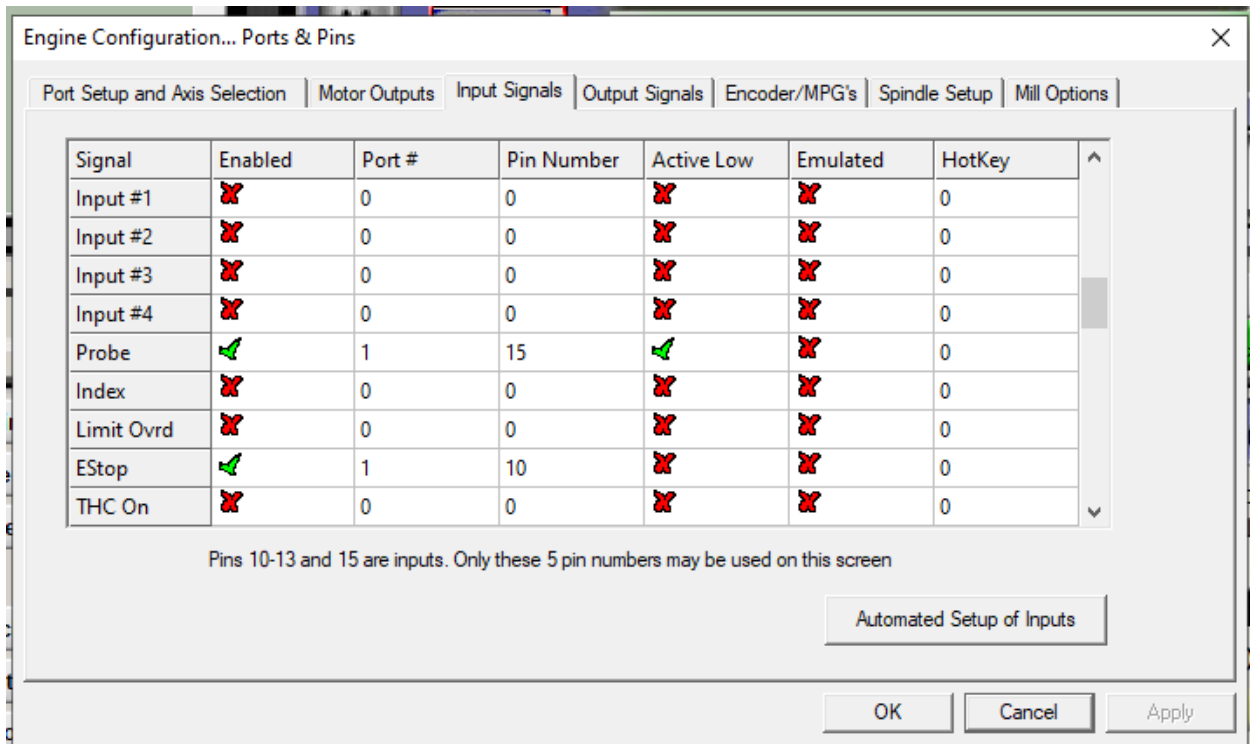
- Motor Outputs



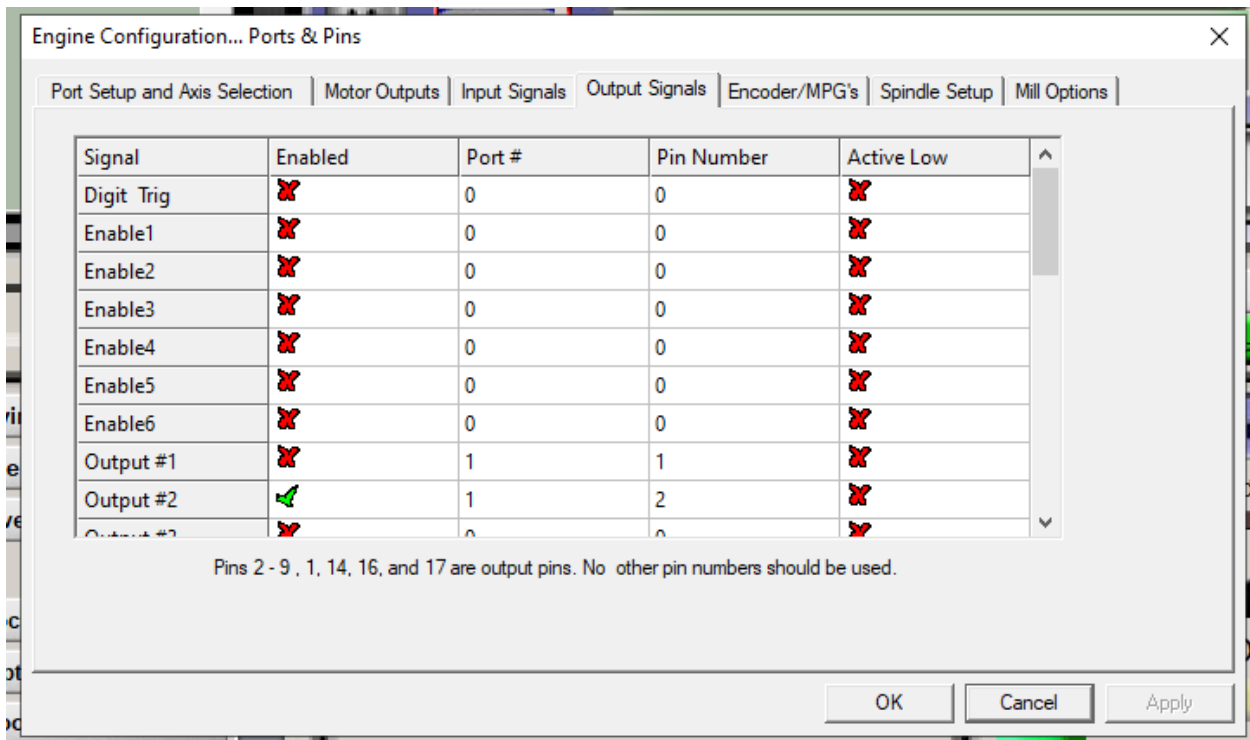
- Input Signals



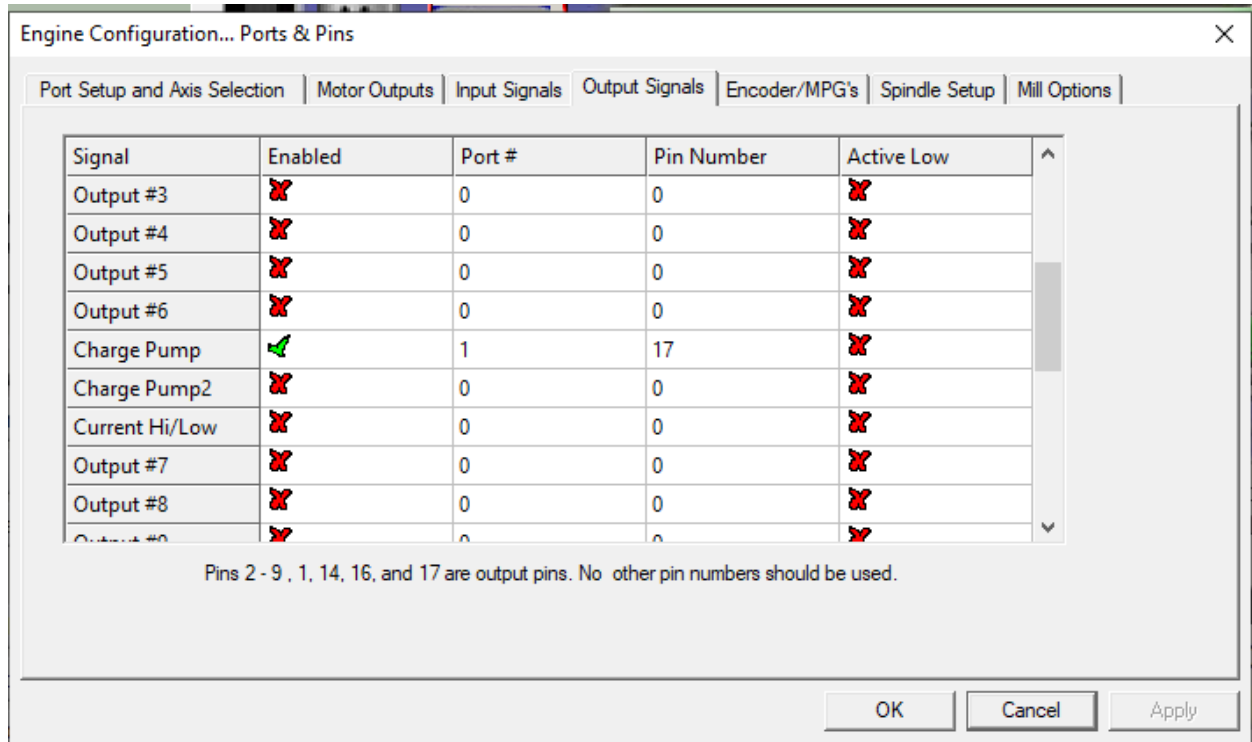
- Input Signals



- Output Signals



- Output Signals



- Spindle Setup

