

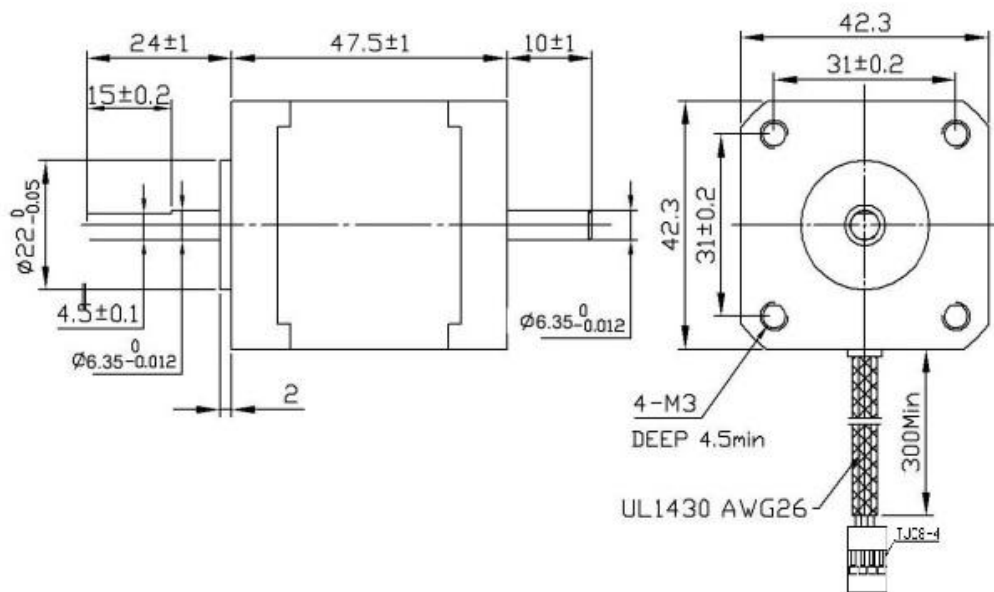
Automation Technology Inc.

Automationtechnologiesinc.com

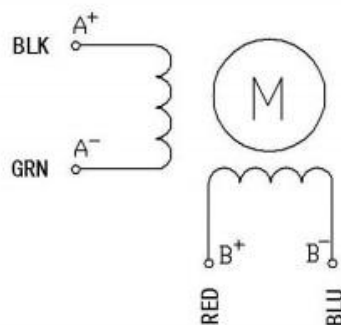
Support@automationtechnologiesinc.com

Hybrid Stepper Motor KL17H247-168-4B

UNIT=MM



MODEL	PHASE	STEP PHASE DEG/STEP	RATED VOLTAGE V	CURRENT /PHASE A	RESISTANCE /PHASE ohms	INDUCTANCE /PHASE mH	HOLDING TORQUE OZ-IN	ROTOR INERTIA gcm ²	WEIGHT Kg
	2	1.8	2.8	1.68	1.65	2.8	61.6	68	0.35



Black to A+
Green to A-
Red to B+
Blue to B-