

KL23H76-30-4AM

COMMON RATINGS

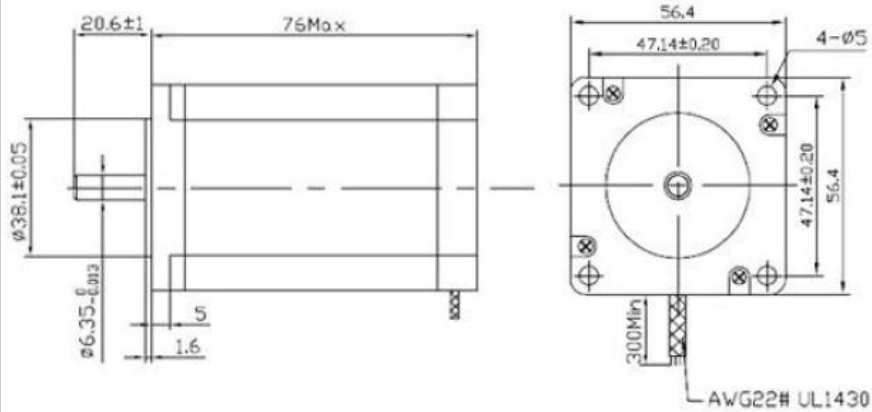
Step angle: 0.9°
 Positional accuracy: +/-5%
 Number of Phase: 2
 Temperature rise: 80°C Max
 Inertia: 480 gcm²

Dielectric strength: 500VDC
 Insulation resistance: 100MOhm(500VDC)
 Radial play: 0.025mm max.(load 450g)
 Insulating class: B
 Weight: 1.0 kg

SPECIFICATIONS

MODEL	PHASE	STEP ANGLE	RATED VOLTAGE	CURRENT /PHASE	RESISTANCE /PHASE	INDUCTANCE /PHASE	HOLDING TORQUE	DETENT TORQUE	ROTOR INERTIA	WEIGHT
		DEG/STEP	V	A	ohms	mH	oz-in	N.cm	g.cm ^e	kg
	2	0.9	3.0	3.0	1.0	4.3	282	6.8	480	1.0

DIMENSIONS unit=mm



CONNECTIONS

